



2647 Turner St.
Victoria, BC V8T 4T8
250-595-8504

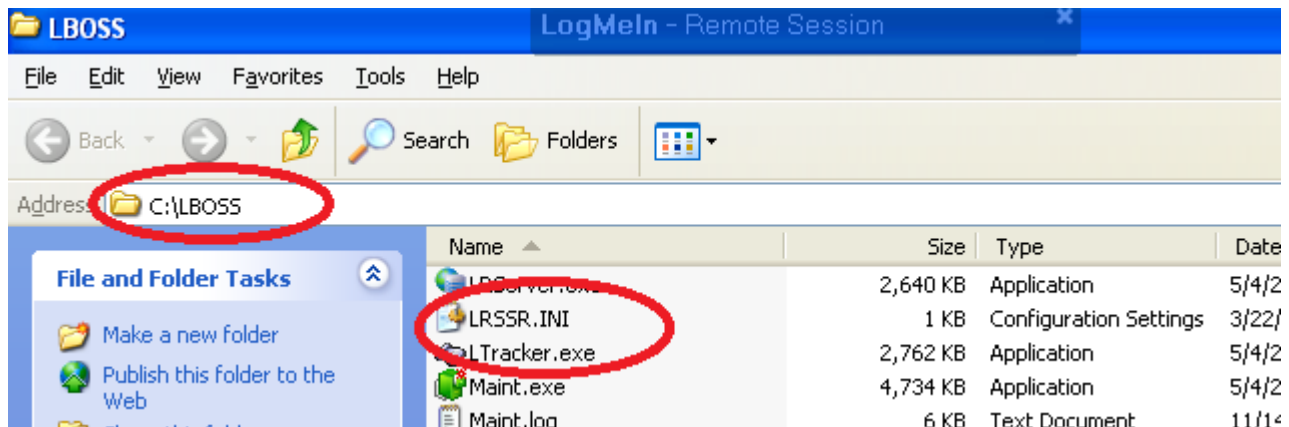
Specific to the Liquor Retail Industry is the tax rate and discount factor. The rates in this file will need to be modified depending on the date range reports are run for. By example, if LRS Cost - Profit by Department less +\$Profit report is required for the Month of March, it would be necessary to modify the **LRSSR.INI** file in LBOSS to the below settings

[GENERAL]
DiscountRate=0.16
VATGST=0.12
VATSST=0.0

By example, If the Receive by Sub Less LRS Disc report is required for a receive performed after April 1st, then it would be necessary to set the **LRSSR.INI** file to the below settings. If the same report was required for a received performed prior to April first it would be necessary to modify the **LRSSR.INI** file to the above settings.

[GENERAL]
DiscountRate=0.16
VATGST=0.05
VATSST=0.10

To find this “INI” file depends on your version of LBOSS and the installation. In the most common version of LBOSS, the LRSSR.INI file can be found in the **C:\LBOSS** folder. Double click the My computer and C Drive and then the LBOSS folder. Search for the **LRSSR.INI** file and double click it. It should open in Notepad and you can change and save the tax rates accordingly.



If you can't find the INI file in the **C:\LBOSS** folder, try the **C:\Program Files\Logivision\LBOSS** location.

Needless to say, it is best to run all the required reports for prior to April 1st so it would not be required to modify the LRSSR.INI file again